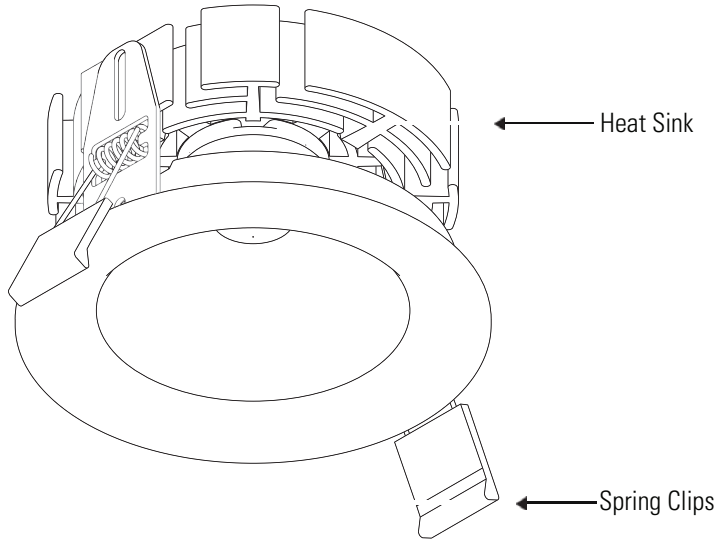
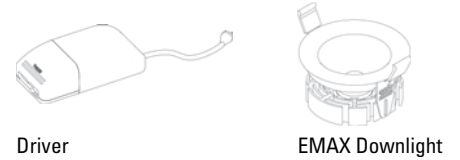




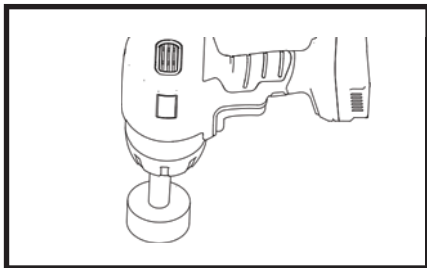
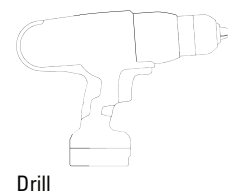
DATE	April 2022	CODE	EMAX-I-4	A
PROJECT		TYPE		



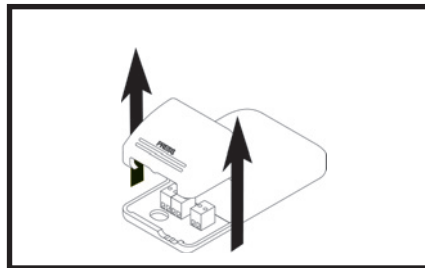
### Supplied parts



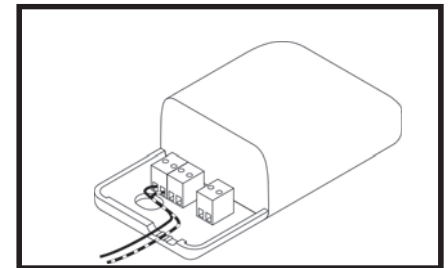
### Required for Installation



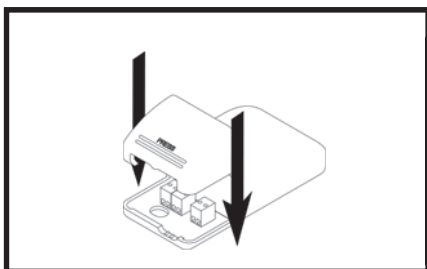
1. Mark and cut a 89mm hole in the ceiling.



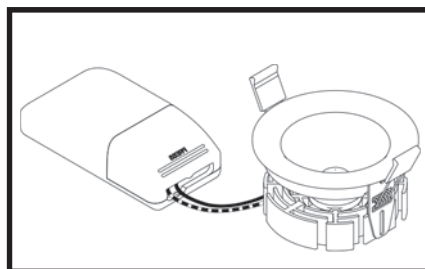
2. If dimming is required, open the strain relief.  
If no dimming is required, skip to step 6.



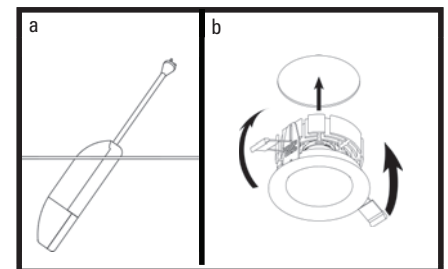
3. Connect building dimming wires to the driver.



4. Close the driver strain relief.



5. Your EMAX Downlight is now ready to be installed into the ceiling.



6. a) Feed the driver through the ceiling cutout.  
b) compress the Spring Clips and feed your EMAX Downlight through the cut out in the ceiling.

Your EMAX Downlight is now installed.

