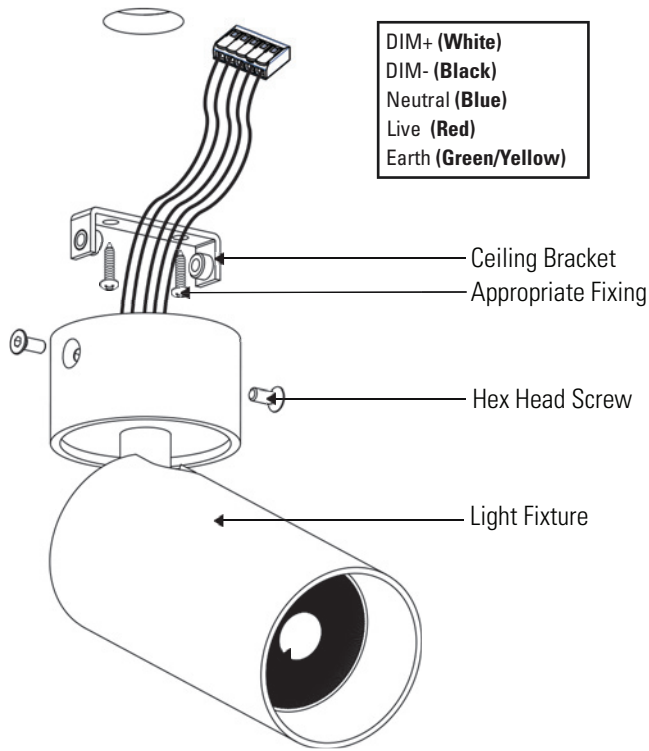
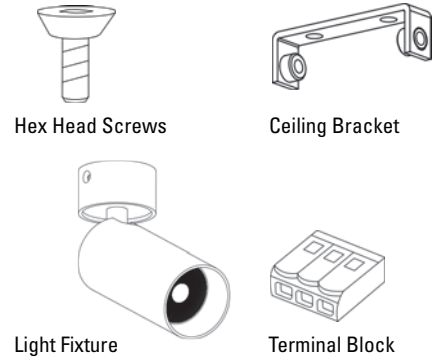


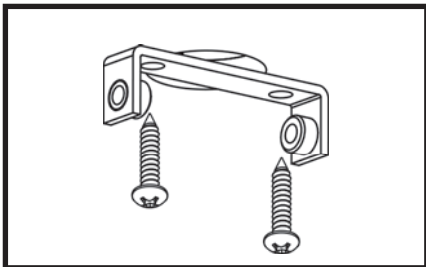
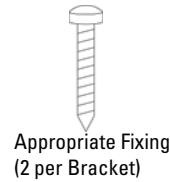
DATE	April 2023	CODE	ENLEDG-IS-1	A
------	------------	------	-------------	---



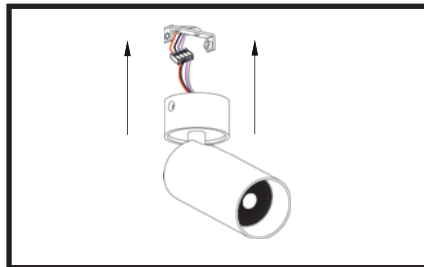
Supplied parts



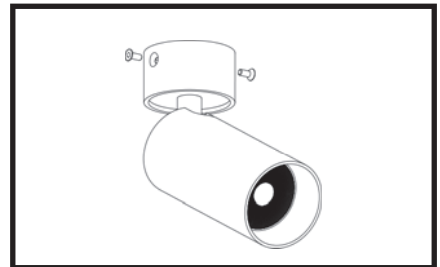
Required for Installation



1. Fasten the Ceiling Bracket to the ceiling using Appropriate Fixings. (Fixings not supplied)



2. Feed the cables through the opening in the ceiling and connect to building power.



3. Align the screw holes and fasten the Light Fixture to the Ceiling Bracket.

The installation is now complete.